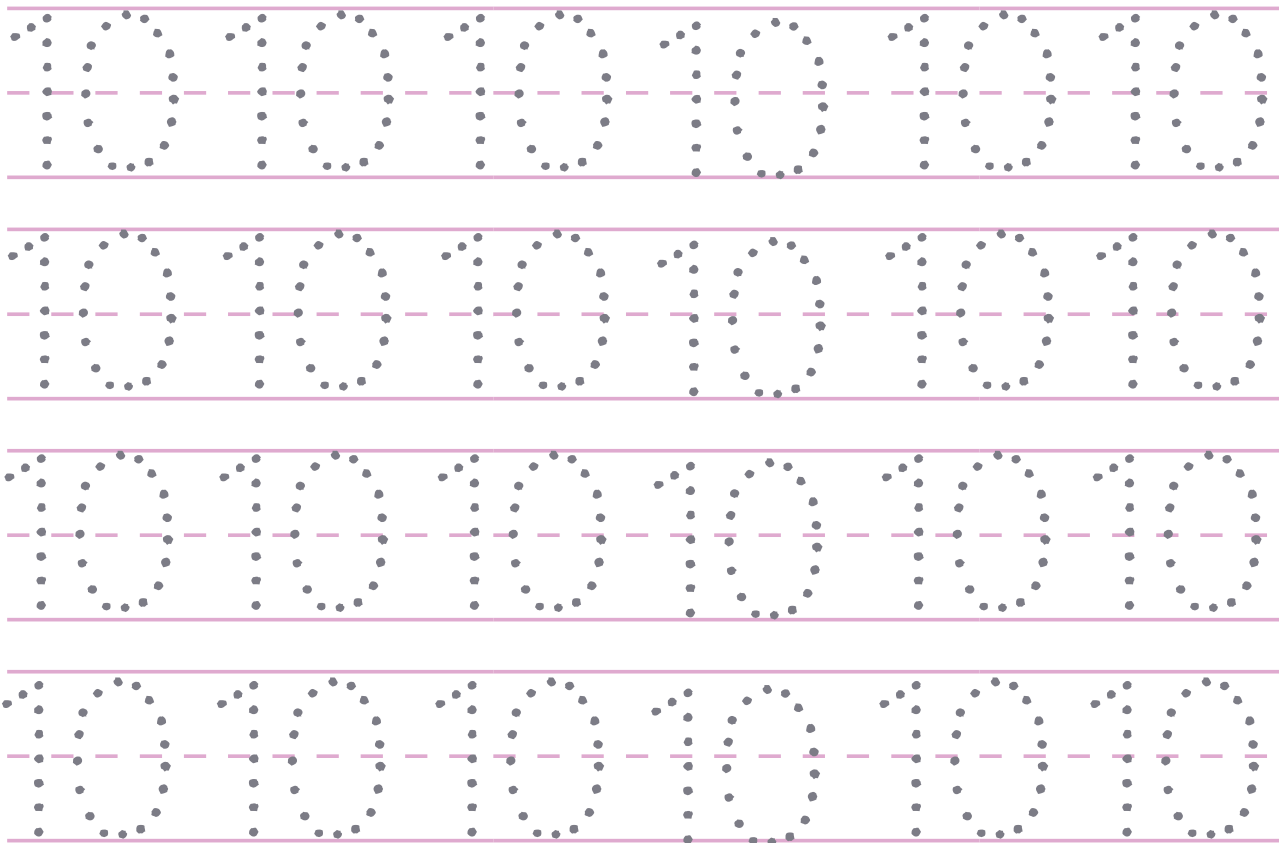
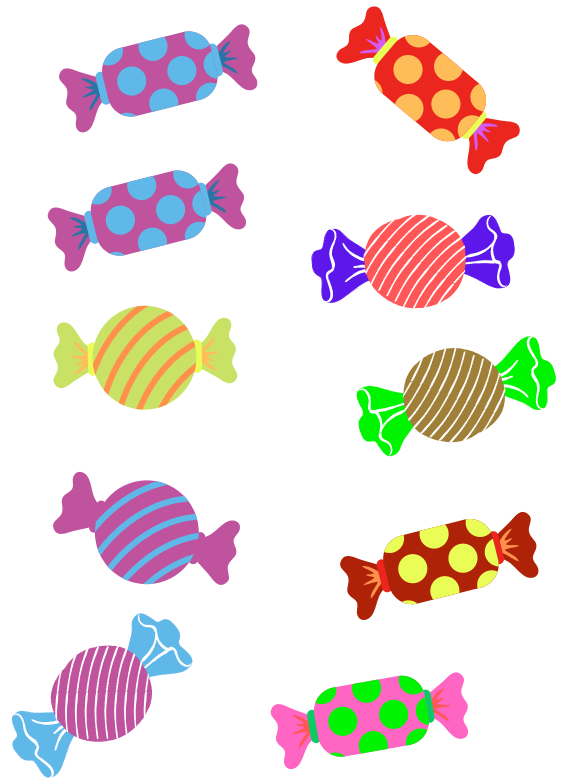


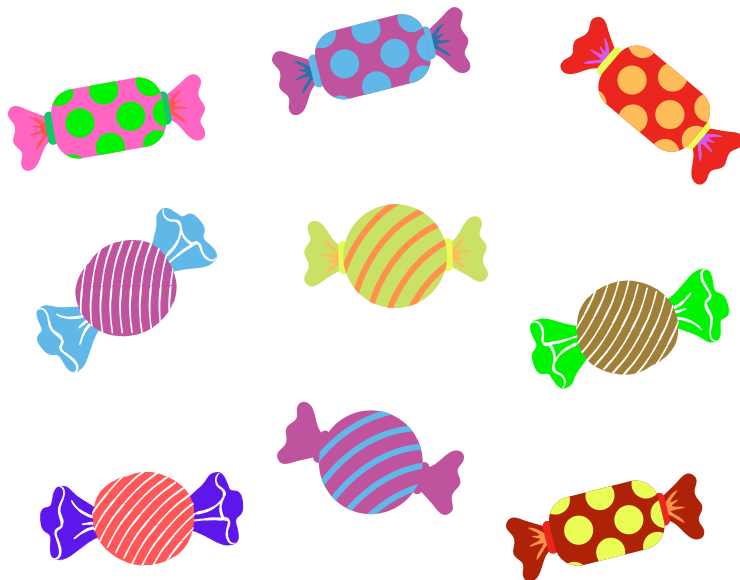
NAME

DATE



NAME

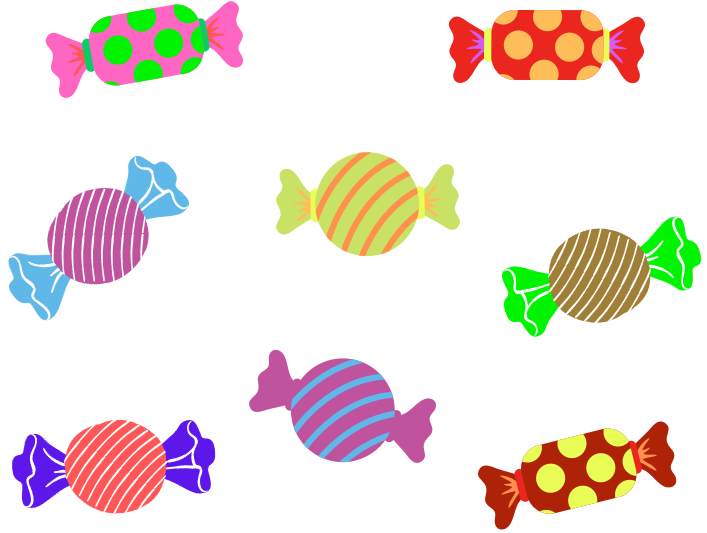
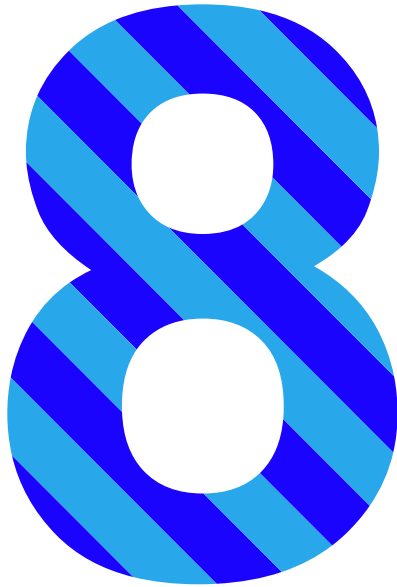
DATE



Tracing practice lines for the number 9. Each row contains six dotted number 9s on a set of three horizontal lines (top, middle dashed, bottom).

NAME

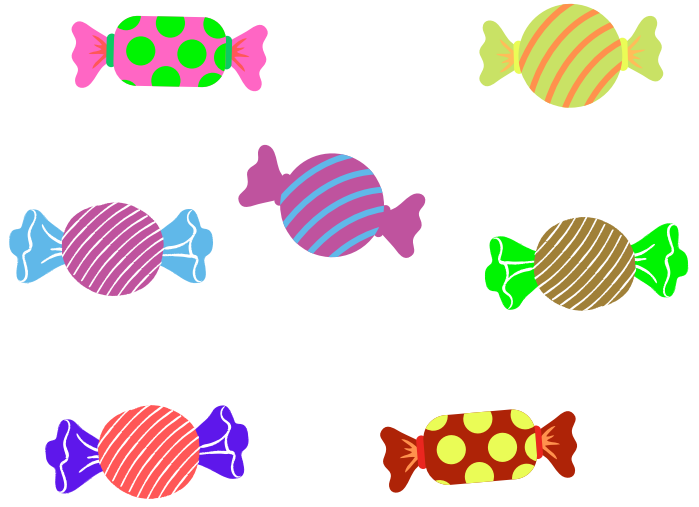
DATE



Tracing practice lines for the number 8. Each row contains six dotted number 8s on a set of three horizontal lines (top, middle dashed, bottom).

NAME

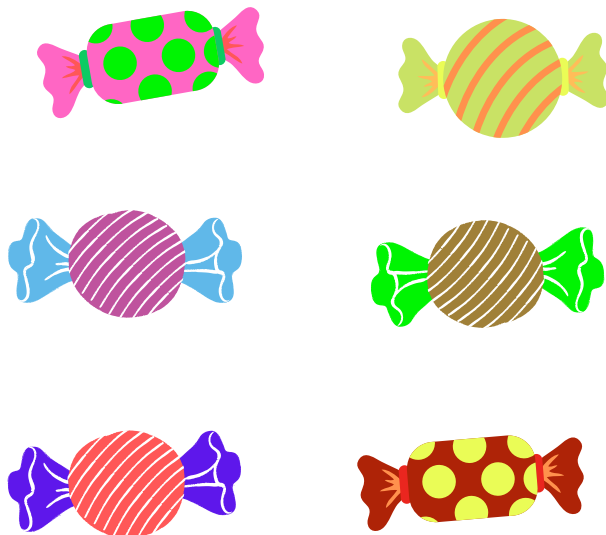
DATE



Tracing practice lines for the number 7. Each row contains six dotted number 7s on a three-line grid (top solid, middle dashed, bottom solid) for tracing.

NAME

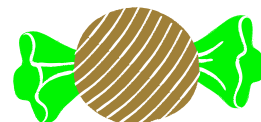
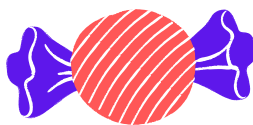
DATE



Tracing practice lines for the number 6. Each row contains six dotted number 6s on a three-line grid (top, middle dashed, bottom) for tracing.

NAME

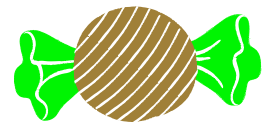
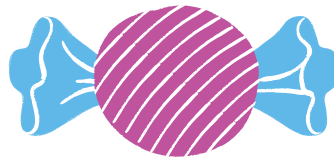
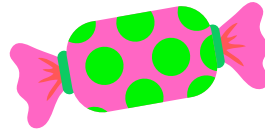
DATE



Tracing practice lines for the number 5. Each row contains six dotted number 5s on a three-line grid (top, middle dashed, bottom) for tracing.

NAME

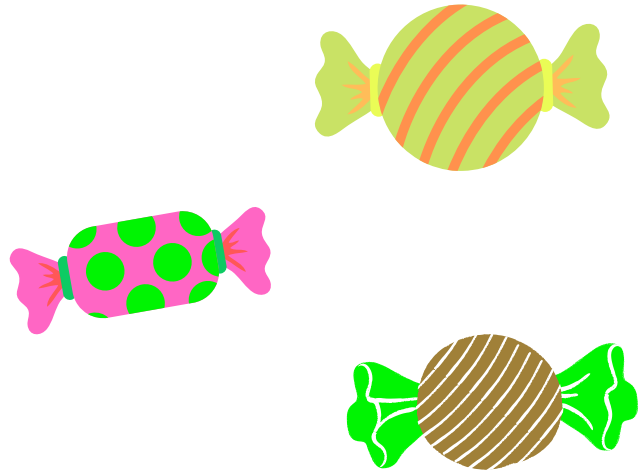
DATE



Tracing practice for the number 4. The page contains four rows of handwriting lines. Each row consists of a solid top line, a dashed middle line, and a solid bottom line. Six dotted number 4s are placed on each row for tracing.

NAME

DATE

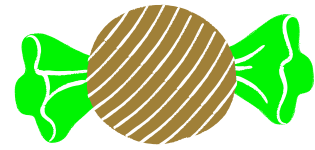
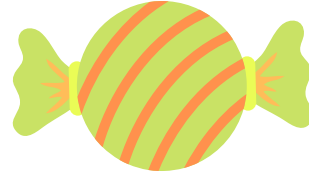


Tracing practice lines for the number 3, consisting of four rows of six dotted 3s on a three-line grid.



NAME

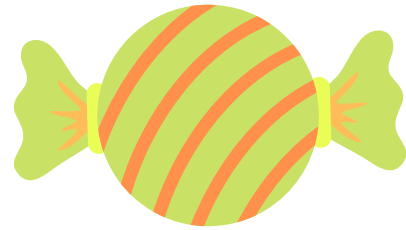
DATE



Tracing practice for the number 2. It consists of four rows of handwriting lines (top solid, middle dashed, bottom solid). Each row contains six dotted number 2s for tracing.

NAME

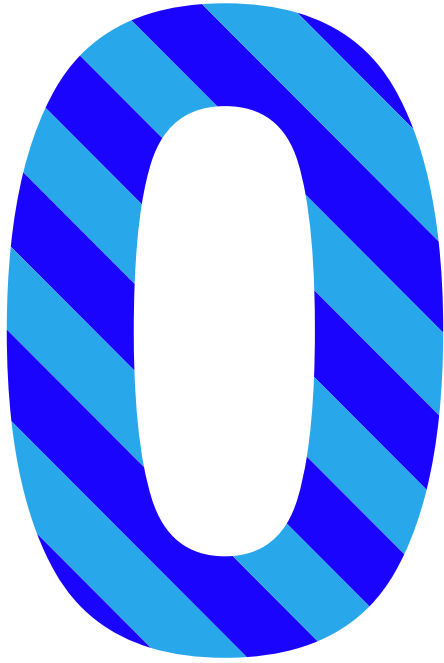
DATE



Tracing practice lines for the number 1. Each row contains six dotted '1's on a set of three horizontal lines (top, middle dashed, bottom).

NAME

DATE



Tracing practice for the letter 'O'. It consists of four rows of handwriting lines. Each row contains six dotted uppercase 'O's for tracing. The handwriting lines are composed of a solid top line, a dashed middle line, and a solid bottom line.